

Eagle's Nest Project Overview

March 2025

Truth and Reconciliation

Land Acknowledgement

We acknowledge that our Toronto office is located on the territory of many nations including the Mississaugas of the Credit, the Anishnabeg, the Chippewa, the Haudenosaunee and the Wendat peoples and is now home to many diverse First Nations, Inuit and Métis peoples. We also acknowledge that Toronto is covered by Treaty 13 with the Mississaugas of the Credit.

Our Thunder Bay office is located on the traditional land of the Anishnawbe people and is where they and many other peoples have gathered for time immemorial. This sacred place, originally known as Anemki Wequedong, is now also the Treaty Territory of the Fort William First Nation, signatories to the Robinson-Superior Treaty in 1850.

Our Eagle's Nest Project is on the territory of the Anishnawbe people of Marten Falls First Nation and neighbours Webequie First Nation, both signatories to Treaty 9.

In Australia, we acknowledge our work locations and operations are located on Nyoongar, Ngadjju and Marlinyu Ghoorlie Country.

Call to Action #92

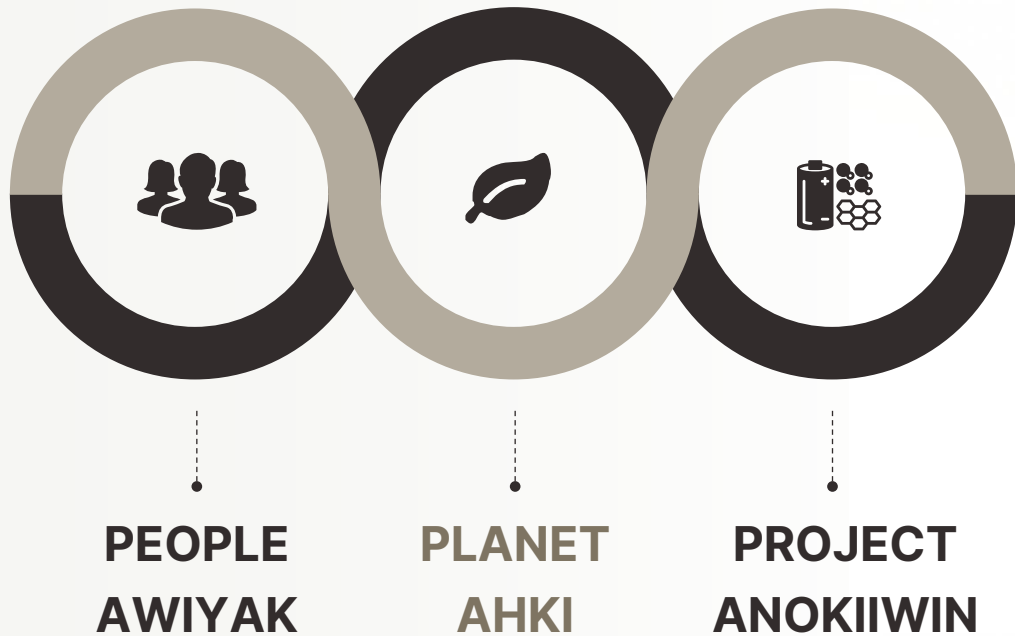
Our commitment is to uphold Call to Action #92 as outlined in the **Truth and Reconciliation Commission of Canada Calls to Action** report.

This includes fostering meaningful relationships with Indigenous communities, promoting equitable opportunities for training and employment, as well as building a system to support Indigenous business development and growth to further our ongoing work. We also commit to providing ongoing training and awareness of Indigenous issues and Indigenous history in Canada within our organization.



Wyloo Ring of Fire

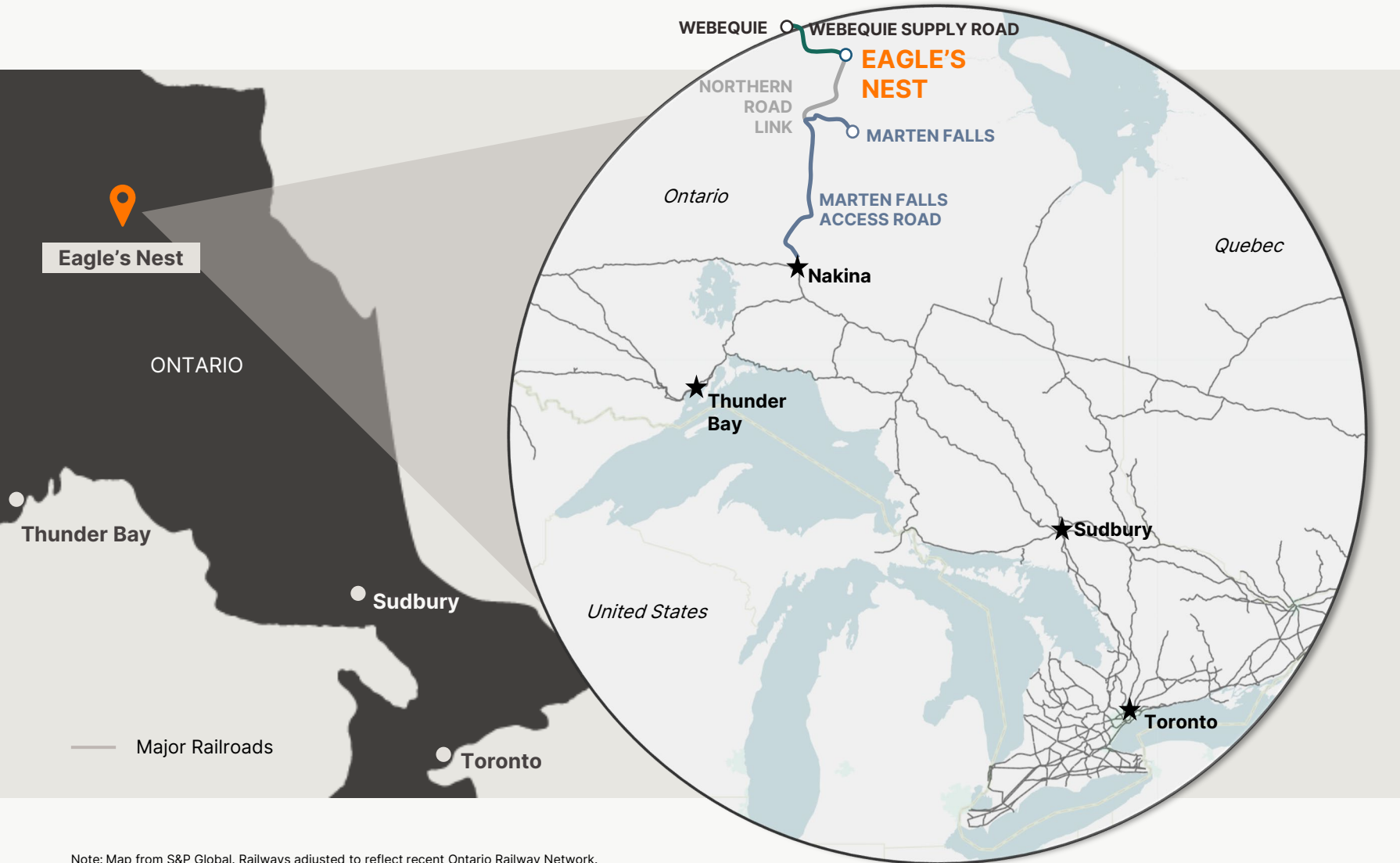
Developing world-class operations vital for the clean energy transition



- **People:** Genuine partnership + collaboration with local communities to create prosperity and opportunity for generations to come
- **Planet:** Industry-leading practices and technologies as we set a **new benchmark for sustainable mining**
- **Project:** Long mine-life to deliver high quality Ni + Cu concentrates for downstream processing **mine-to-pCAM**



Eagle's Nest Project



Note: Map from S&P Global. Railways adjusted to reflect recent Ontario Railway Network.

Contributing to Canada's Critical Minerals Supply



Underground Mine

- Limited footprint
- Underground tailings storage

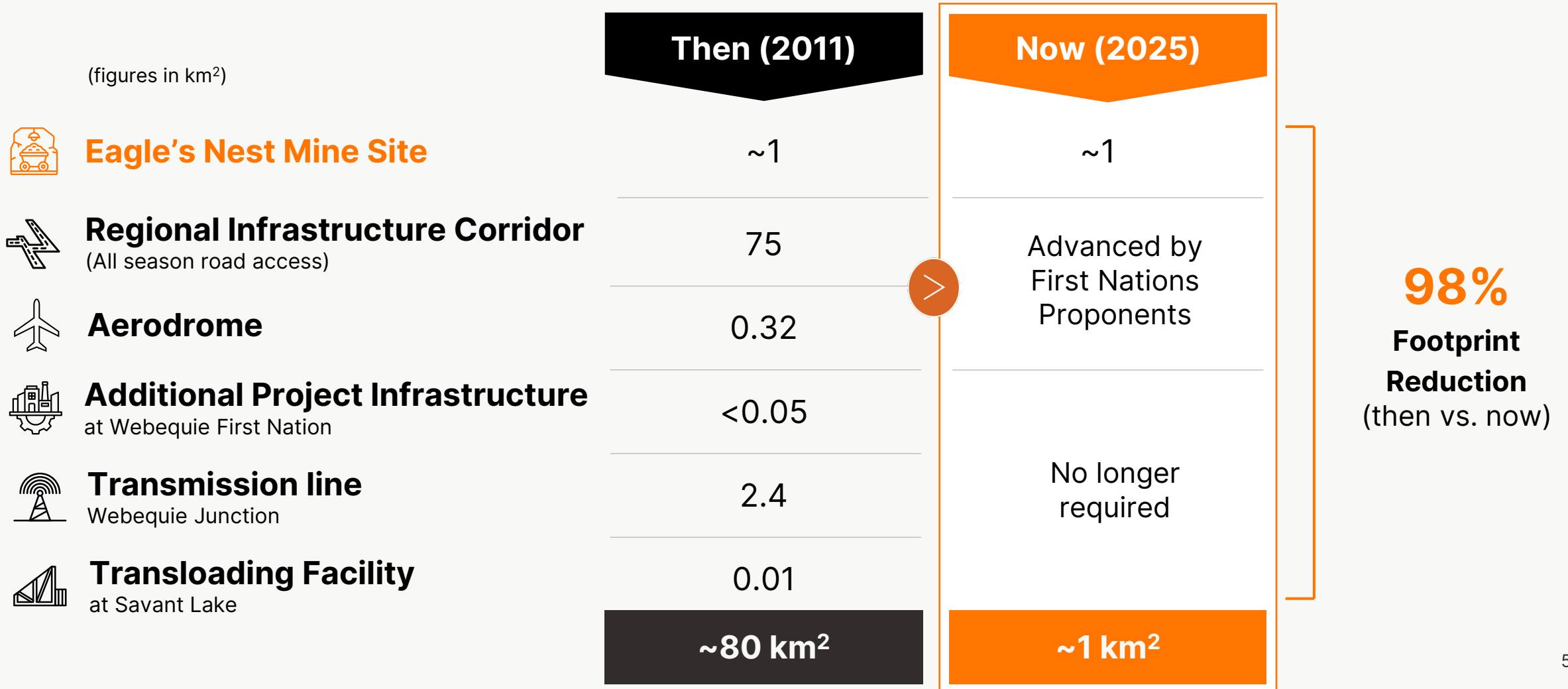


Critical minerals include:

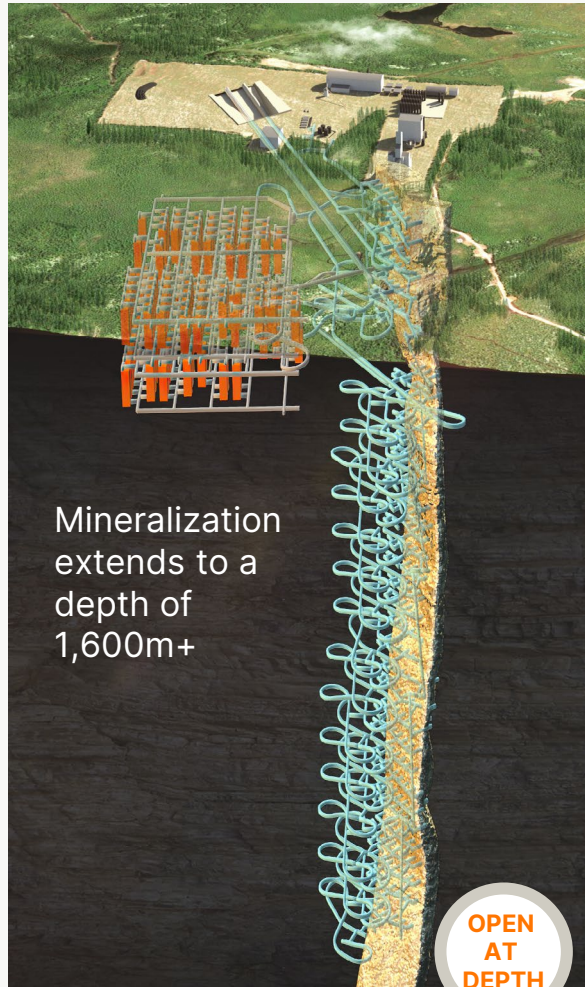
- nickel
- copper
- *palladium*
- *platinum*
- *cobalt*
- *chromite*

With Indigenous-led Projects

The current Project is only comprised of the mine site, reducing the overall Project footprint



Sustainability at the heart of our design



1. Surface layout subject to final mine design



Small 1km² Footprint:

- Majority of mine design on uplands (not peatlands), mainly over existing Esker Camp



Minimal Surface Disruption

- NO** → surface tailings, surface quarry, open pits, permanent waste rockpiles



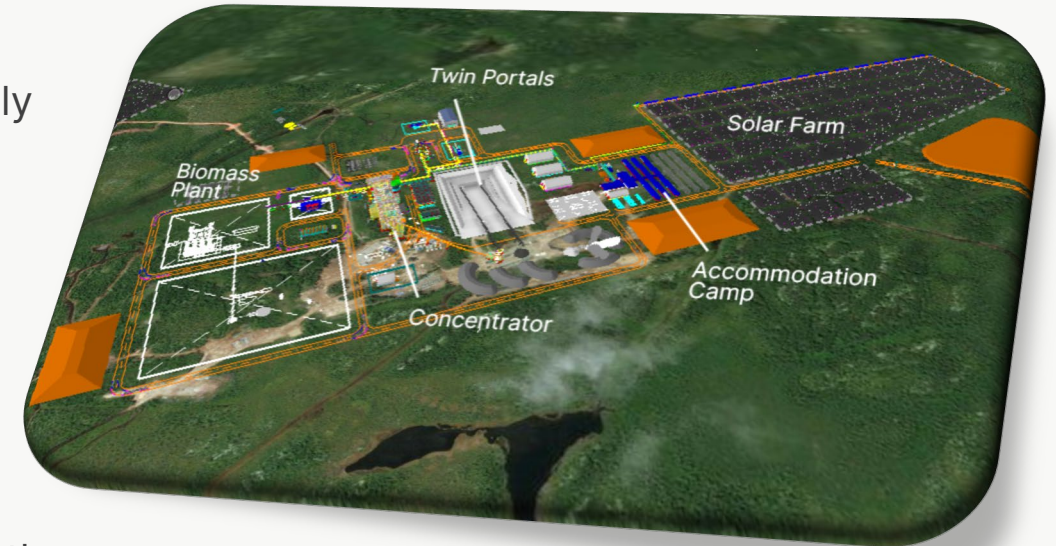
Closed-loop water circuit

- Minimizes potential impact to the environment

100% of tailings will be stored underground

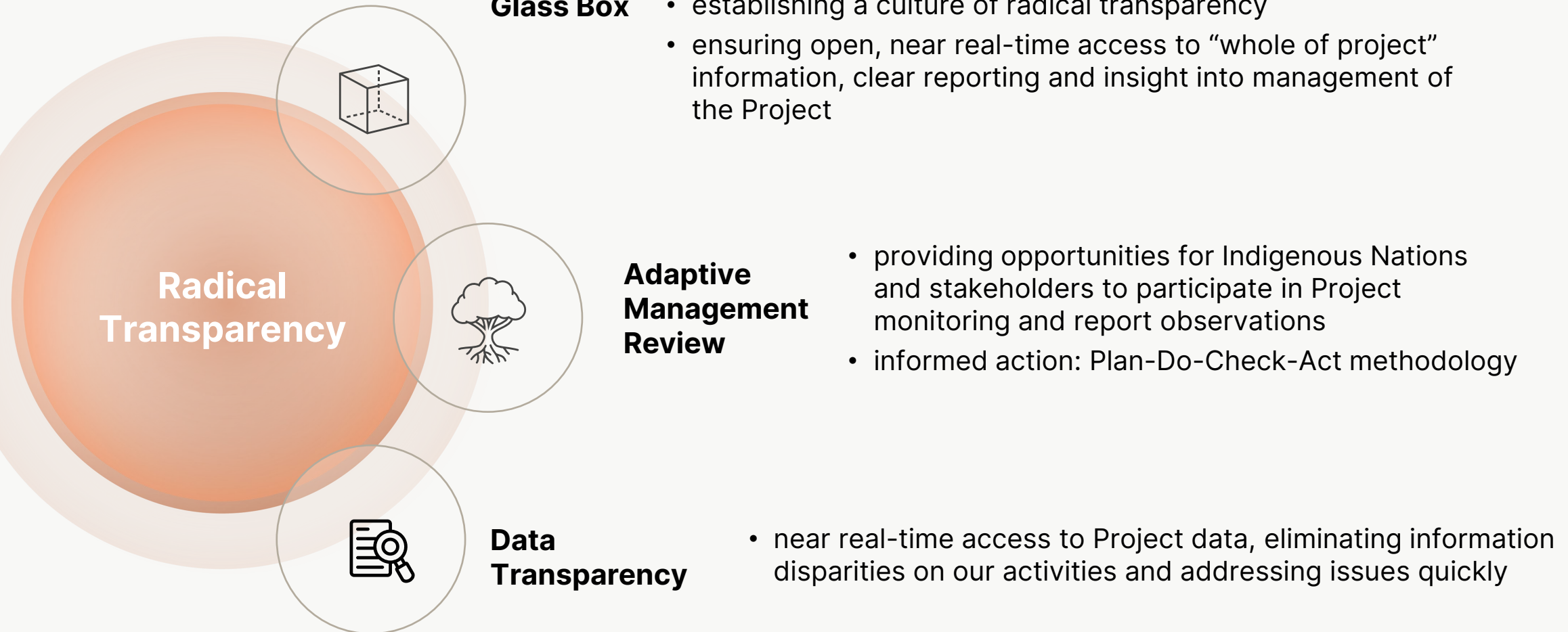
The construction of a road simultaneously with the mine removes the need for a surface tailings dam, creating one of the **smallest footprint mines in the world.**

(looking northeast) ¹



Transparency in Action

Ensuring Indigenous Nations are meaningfully involved in planning and implementation



Comprehensive Indigenous Participation

Partnering with local Indigenous communities and working alongside contractors, suppliers and surrounding communities



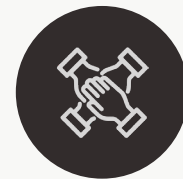
Create and sustain Indigenous training and employment opportunities



\$100M+ contract awards to Indigenous-led businesses



Capacity building in Indigenous businesses



Signed MOUs working toward Relationship Agreements

Webequie First Nation

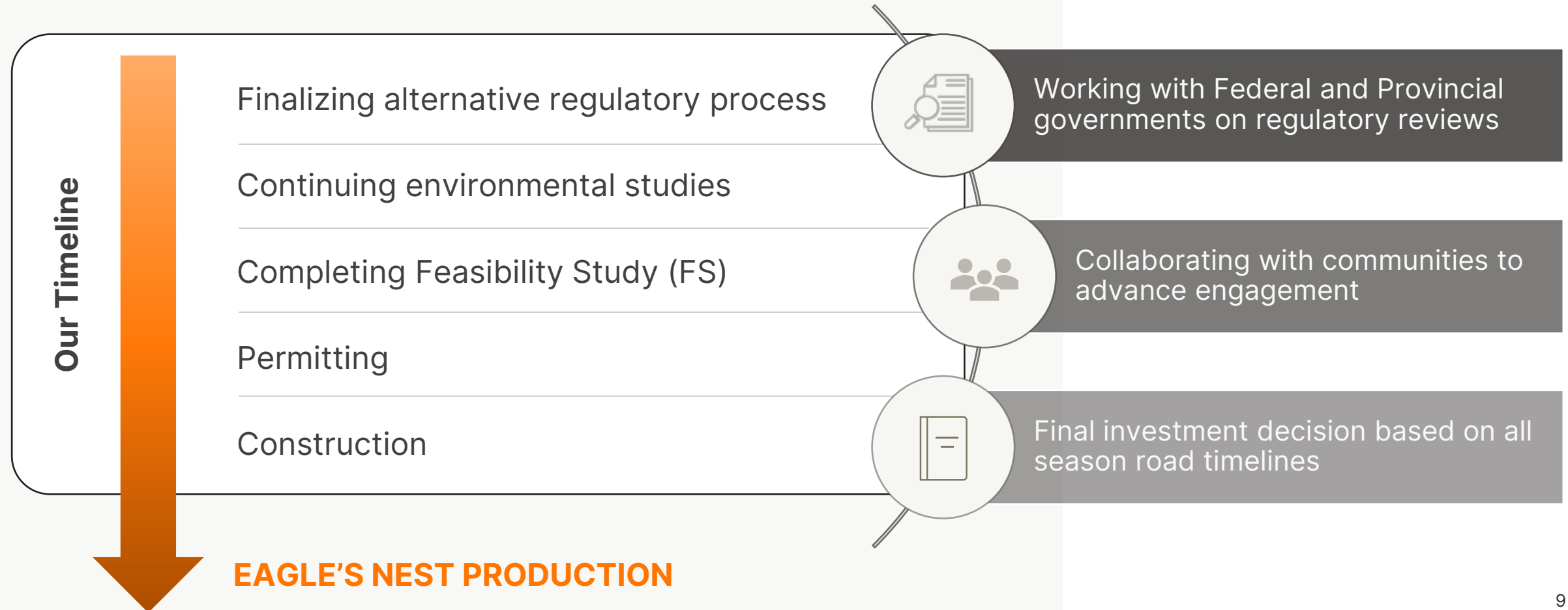


Marten Falls First Nation



Our Path to Production

Opportunity to supply Ontario and Canada with high-grade nickel sulphide mined sustainably in partnership with local communities



Aim to Create One of the Smallest Footprint Mines in the World



1 km²

Eagle's Nest Project
Ring of Fire, ON



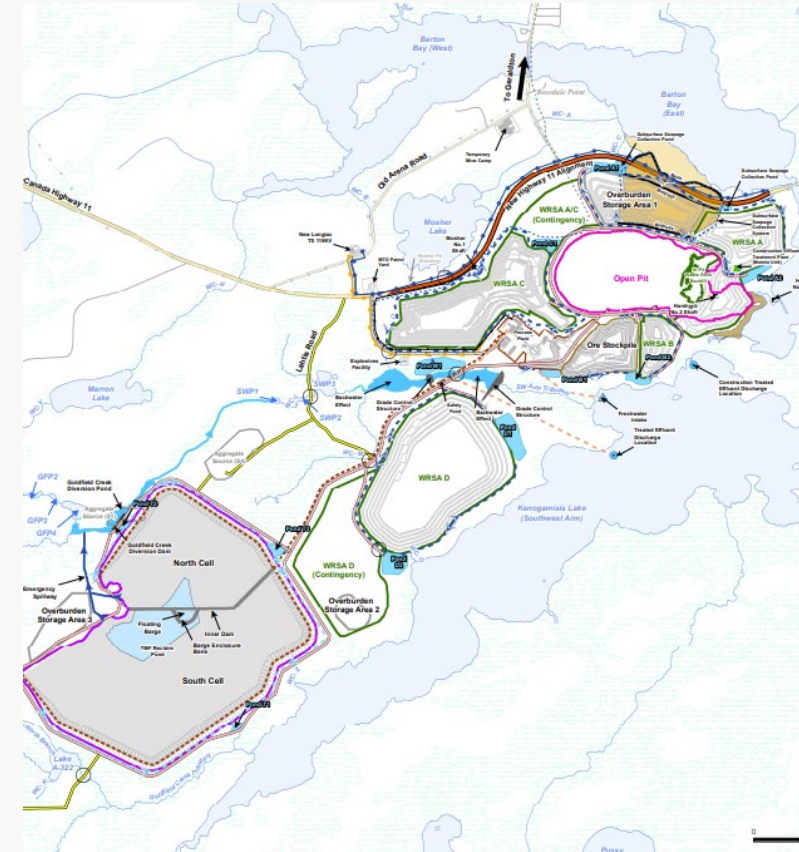
9 km²

Lac des Iles Mine,
Thunder Bay, ON



12 km²

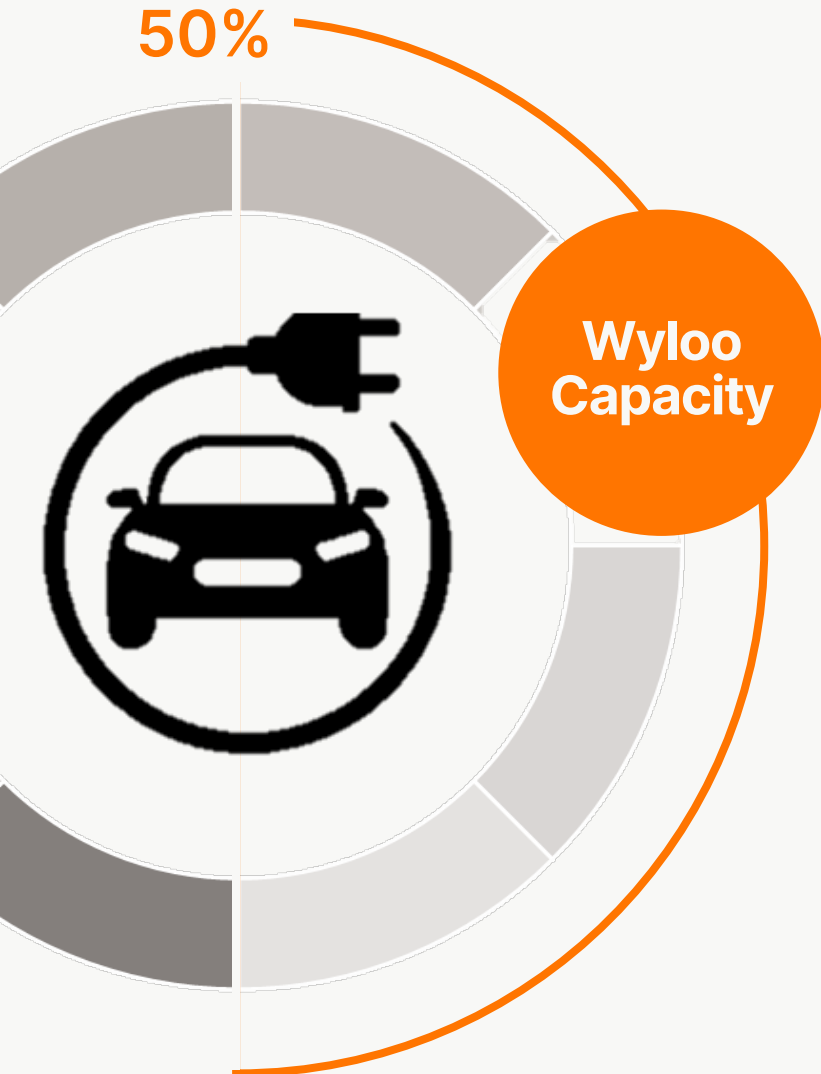
Dome Mine,
Timmins, ON



22 km²

Greenstone Gold Mine
Geraldton, ON

Driving the Future with Domestic Nickel



With domestically-sourced and processed material, we are planning to develop up to 50 kt of nickel in sulphate and pCAM, **meeting 50% of the demand for Ontario battery facilities that have been announced to date.**

Eagle's Nest concentrate

enough to produce

250,000 EVs per year



Together with other feed

enough to produce

800,000 EVs per year

- Represents ~7.5% of the 2030 forecast North American EV market¹

1. Public company announcements. Assumes a NCM811 battery chemistry, 75kg nickel per 100kwh of capacity and CAM of 72% nickel. Note: Figures rounded to the nearest 000s.

Miigwech

www.wyloo.com



Wyloo is an organization driven by a set of Values



Kaa'kichiinetamakin

Family

Peshikoo tipechikewin

Stretch Targets

Niikaan oh'nachikewin
kaakakwe tebinikaatek

Safety

A'yakwaamisiwin

Generating Ideas

Kaa'onchi'kaatekin
ohnetamowinan

Empowerment

Mashka'wikaaba'wi'hiwewin

Integrity

Kwaykochi'kewin

Courage & Determination

Shii'ketamowin miina
a'iikametamowin

Humility

Tapa'senimowin

Frugality

Manaa'chi'chikewin

Enthusiasm

Chii'kentamowin

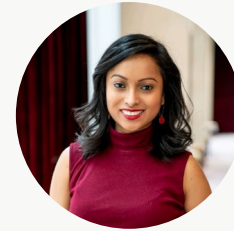
Our Team – Canada



Our team in Canada is supported by a group of dedicated Sustainability members across several key areas.



Kristan Straub
CEO Canada



Alina Shams
Director,
Government
Relations &
Sustainability



Ryan Tuomi
Manager,
Community
Engagement



Stephen Crozier
Vice President,
Sustainability



Zahir Jina
Director,
Environment



Clyde Moonias
Coordinator,
Community
Relations



Glenn Nolan
Vice President,
Indigenous
Enterprises